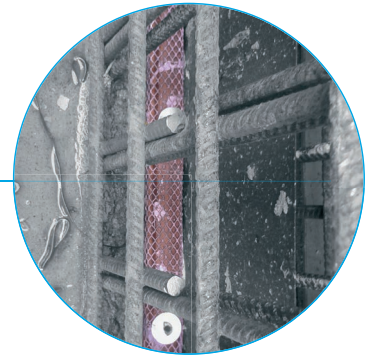




BENTOBAR+

Bentonite self-expanding sealing bar
for sealing construction joints



Stable quality



Less susceptible to
washing out



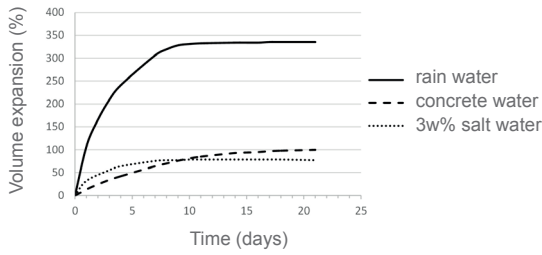
Also available
for salt water

Watch the 3D installation video

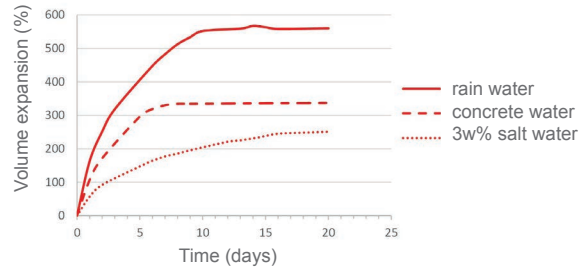






EXPANSION CAPACITY BENTOBAR+

BENTOBAR+ standard version 20x25 mm



BENTOBAR+ salt water version 20x25 mm



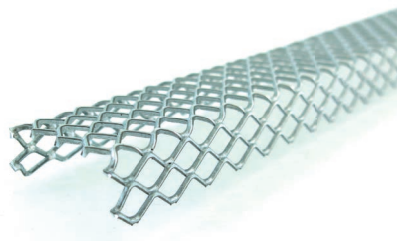
STANDARD VERSION	PRODUCT NAME	COLOR	BOX	PALLET	SALT WATER VERSION
	BENTOBAR+ 20x10 mm	BLACK/GREEN	5x10 m	60x50 m = 3.000 m	
	BENTOBAR+ 20x25 mm	BLACK/GREEN	6x5 m	48x30 m = 1.440 m	

Bentobar+ self-expanding sealing bars are available in

- a standard version (black or green)
- a salt version (red) for salt water up to 3w% and contaminated water

BESEALED® FIXING ACCESSORIES

CERTIFICATES



P-5045/782/14 MPA-BS



New in our product range. More information in the BeSealed® Fixing Accessories brochure or on our website.

POLYBAR+: AN ALTERNATIVE REVOLUTIONARY SOLUTION FOR SEALING CONSTRUCTION JOINTS



The water swellable sealing products by BeSealed are based on the unique Active Sealing Technology. Our products expand on contact with water. This is how they create an active seal to combat moisture infiltration. The BeSealed products are self-correcting and thus also sealing the unevenness and imperfections of the concrete.